

**ESON Precision Engineering Co., Ltd.**

---

**Institutional Investors Conference**  
**2025. 11. 20**

# Disclaimer

---

- This presentation, along with related information disclosed, contains forward-looking information obtained from both internal and external sources
- The actual operating results, financial condition, and business outlook of the company in the future may differ from the estimates implied or expressed in this forward-looking information, and such variances may arise due to various risks beyond the company's control.
- The financial information disclosed in this presentation has not been fully audited or reviewed by auditors and is provided for reference only. For detailed information, please refer to the auditor's financial audit report
- The forward-looking statements in this presentation reflect the company's views as of the present date. The company is not responsible for providing timely reminders or updates in the event of any changes or adjustments to these views in the future.



# CONTENTS

ESON

**01** Financial Overview 2025Q3

**02** Company Outlook  
2025Q4&2026

**03** Global Layout and  
Business Development

**04** Q & A

**01**

# Financial Overview 2025Q3



# 2025 Q3 Incom statement

ESON

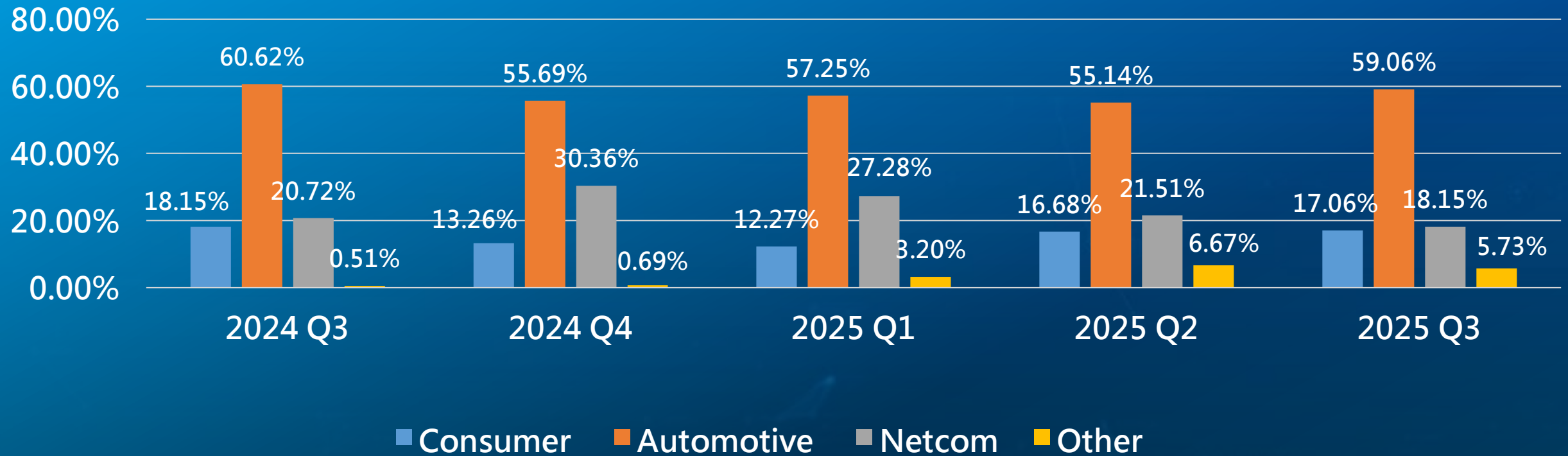
(NTD in thousands)	FY25 Q3	FY25 Q2	QoQ %	FY25 Jan-Sep	FY24 Jan-Sep	YoY %
Operating Revenue	2,774,414	3,034,048	-9%	9,188,905	9,439,086	-3%
Gross Profit	702,756	649,573	+8%	1,969,811	1,834,464	+7%
Operating Income	281,066	241,309	+16%	760,514	600,200	+27%
Pre-Tax Income	258,854	249,492	+4%	761,489	539,655	+41%
Net Income	204,005	196,012	+4%	567,781	399,916	+42%
EPS(NTD)	1.21	1.16	-	3.37	2.37	-
Gross margin	25%	21%	-	21%	20%	-
Operating Profit Margin (OPM)	10%	8%	-	8%	7%	-
Net profit margin	7%	7%	-	6%	4%	-

## The numerical trends over the past three years

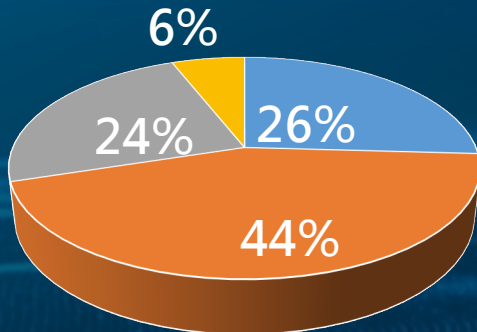


## Product Mix by Quarter

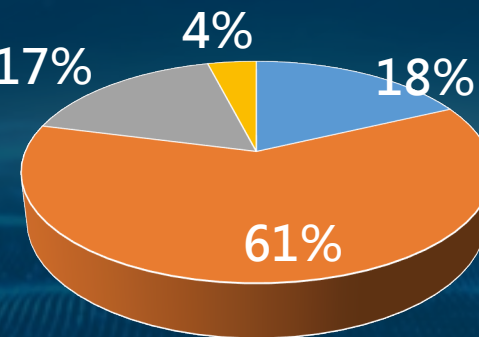
**ESON**



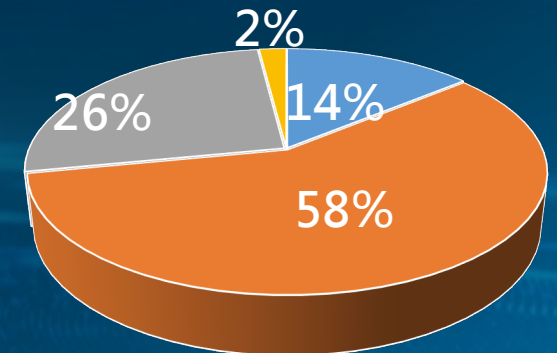
Proportion of Products in 2022



Proportion of Products in 2023



Proportion of Products in 2024





# 02 Company Outlook 2025Q4&2026

# Outlook for 2025 (YoY)



Revenue



Automotive



Netcom



Consumer

Originally  
Estimated  
Conditions



2025  
Q1~Q3  
Actual



2025  
Q4  
Outlook





# Outlook for 2026 (YoY)



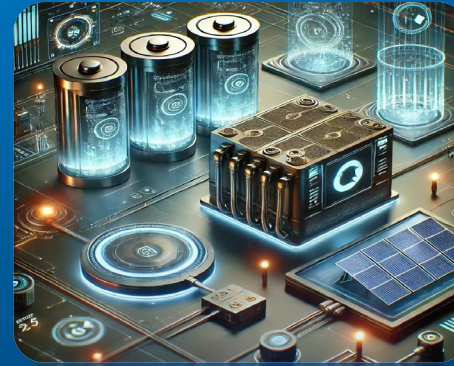
Revenue



Automotive



Netcom



Clean energy



Consumer



- Expanding from single parts to module assembly to boost customer stickiness.
- Improving processes to enhance margin.
- Rising demand for regional/local production.

- New vehicle orders in mass production.
- New North America ATV/UTV customers secured.
- Automated lines co-developed with customers now running.

- AI server orders in mass production.
- Co-developing server-related products.
- Engaging new U.S./EU LEO-satellite customers.

- U.S. new-energy programs in mass production.
- Energy-cabinet line started shipments.

- Secured gaming-console orders.
- Expanding to other devices (navigation, drones, robots)

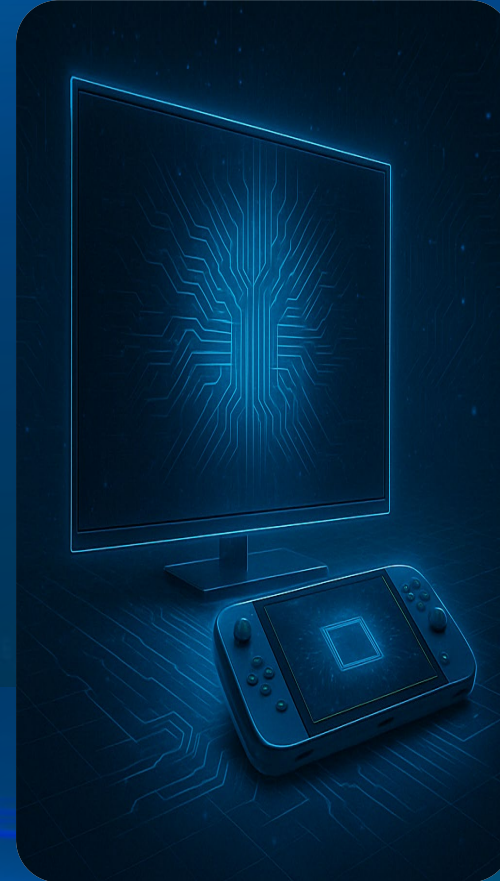
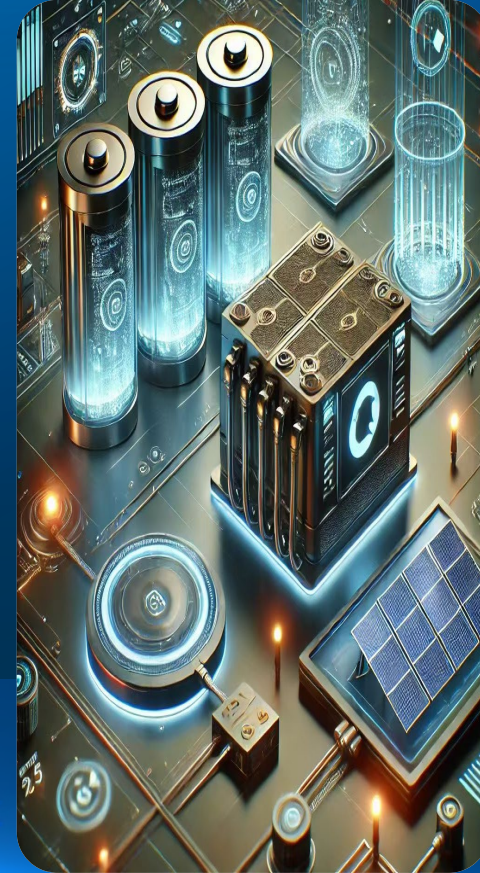
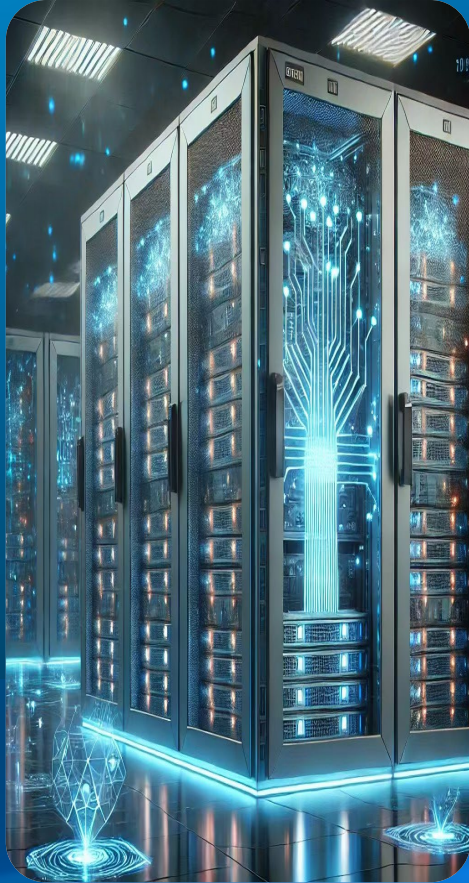


# **03 Global Layout and Business Development**



# Five product categories

ESON



Automotive

AI Server

LEO

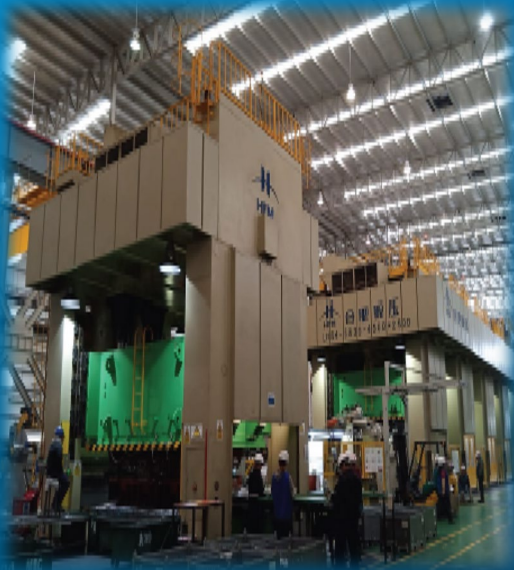
Clean energy

Consumer



# Business Development – Automotive Our advantage

ESON



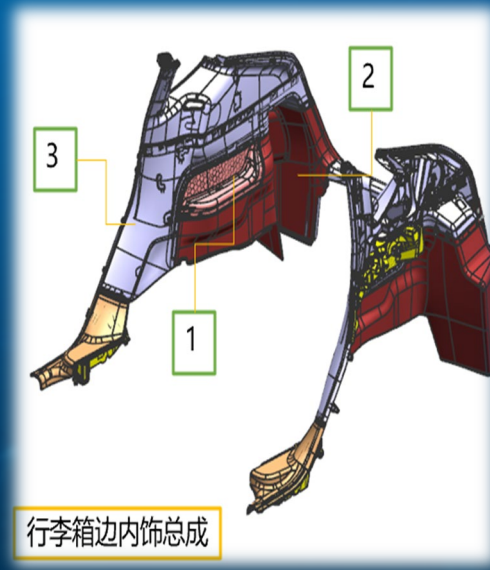
## Complete production equipment

Molding machines, two-shot machines, stamping lines, testing equipment, cleaning, coating, powder-baking lines, laser cutting, bending, CNC, etc.



## Highly automated production line

Automatic feeder, automatic spot welding/riveting, in-mold manipulator, automatic air leakage test



## Diversified production processes

Welding, leather cutting/wrapping, foam molding, hot-melt bonding, insert molding, and component assembly.



## Complete global layout

Global footprint enabling flexible adjustment of production sites to meet regional manufacturing needs.



# Geographical Advantages: Providing Global Service Chain

ESON





- Provide optimal manufacturing hubs for major brands and EMS partners, significantly reducing ocean-freight costs, lead time, and tariff impact.
- C-TPAT certification enables priority, fast, and secure customs clearance, minimizing delays and inspections.
- Shortened supply-chain control allows real-time inventory tracking, synchronized delivery, and optimized warehousing to support uninterrupted production.



# Global Layout -Asia

**ESON**



Location : China(Kunshan)

Production process : Plastic Injection 、 Stamping 、 Coating 、 Welding 、 Assemble 、 Tooling 、 Rack cabinet etc

Manufacture products : Tooling 、 Automotive 、 Network 、 Consumer products etc .



Location : Malaysia/ (Batupahat Johor)

Production process : Plastic Injection 、 Stamping 、 Assemble etc

Manufacture products : Network 、 Server 、 Gaming 、 Consumer products



Location : Vietnam/Quang Ninh Province (Dong Mai )

Production process : Plastic Injection 、 Stamping 、 Assemble etc

Manufacture products : Network 、 Consumer products etc



# Global Layout –North America

ESON



Location: Mexico (Tijuana)

Production process : Plastic Injection 、Stamping 、Welding 、Coating 、Assemble 、Rack cabinet etc

Manufacture products : Automotive 、Network 、Server 、Energy storage 、Consumer products etc



Location : Mexico(Monterrey)

Production process : Plastic Injection 、Stamping 、Welding 、Assemble etc

Manufacture products : Automotive 、Network 、Server 、Energy storage etc

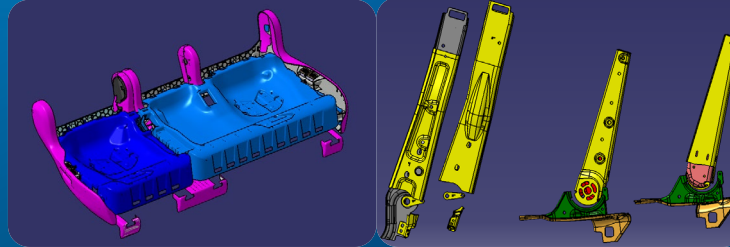
# Business Development-Automotive

ESON

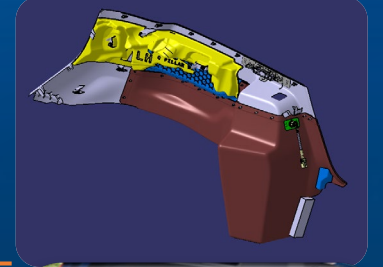
Engine compartment  
structural components



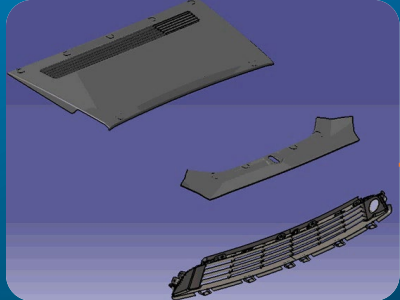
Seats and Seat Brackets



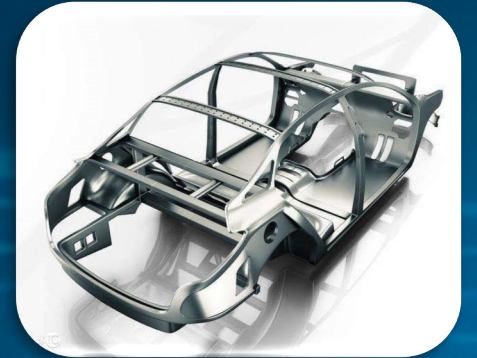
Rear Trunk Handle  
Trim Assembly



Front Grille



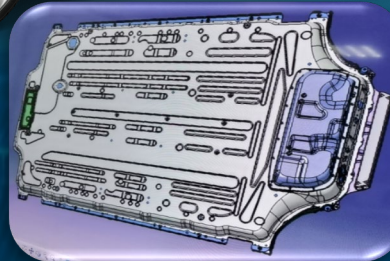
Automotive Body  
Structures



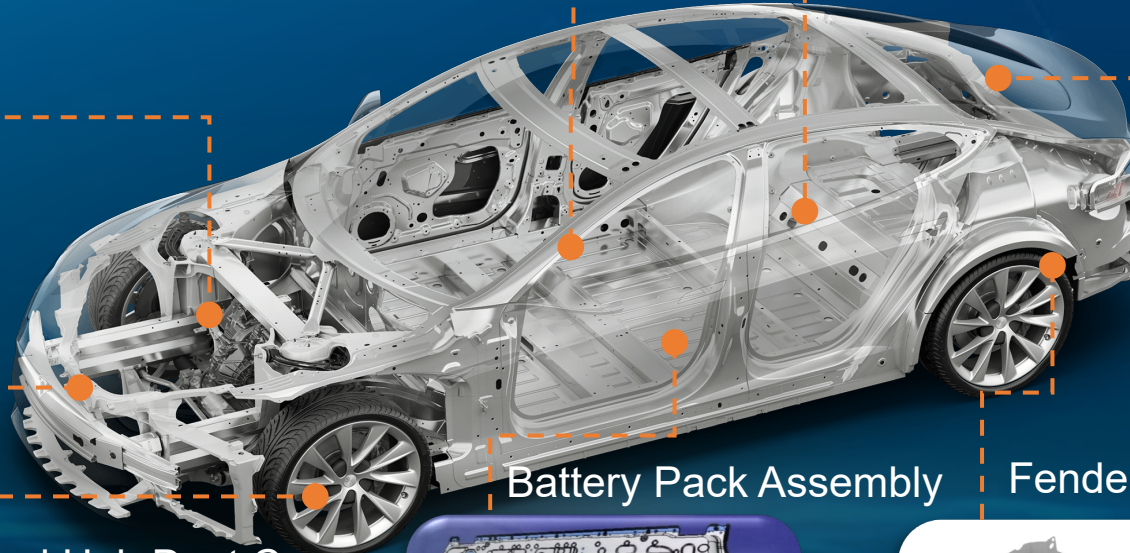
Wheel Hub Dust Cover



Battery Pack Assembly



Fender Liner

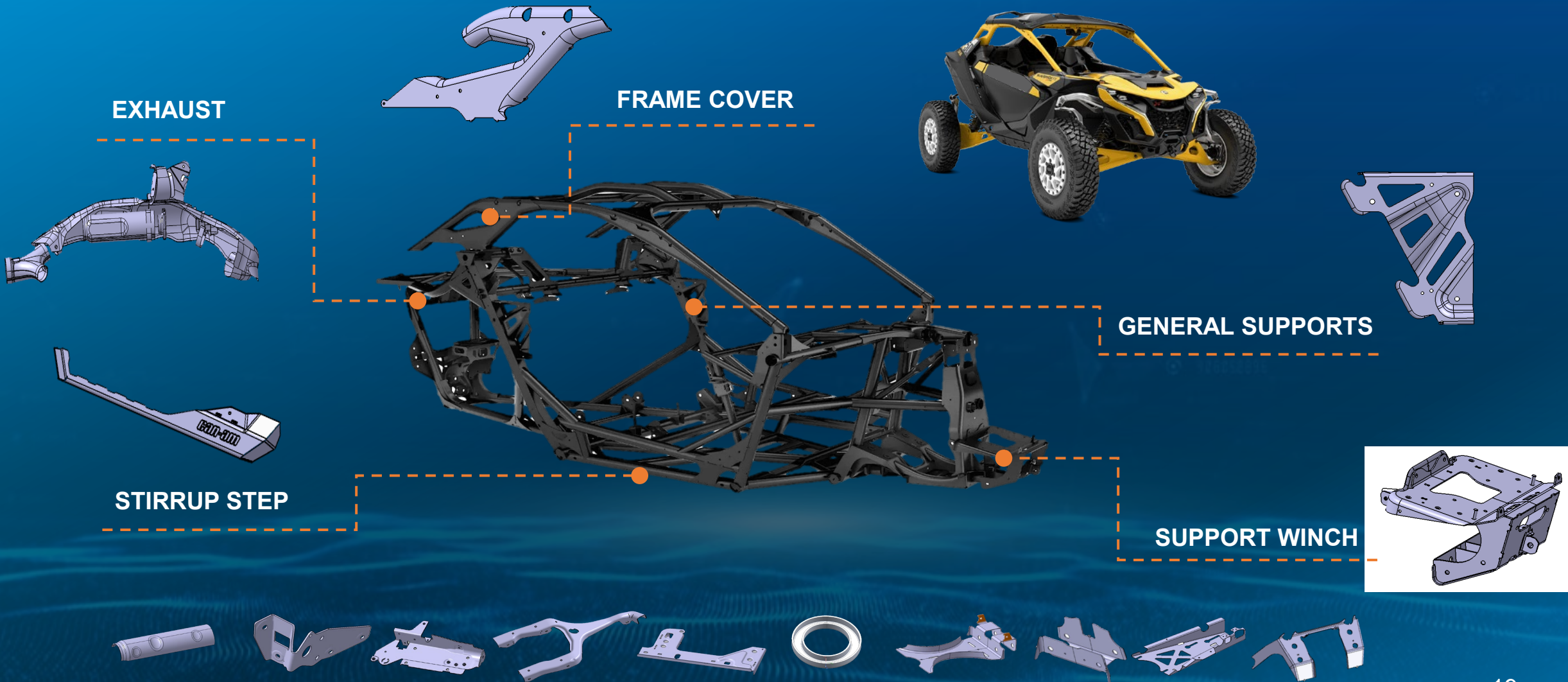




# Business Development –Automotive(ATV/UTV )

ESON

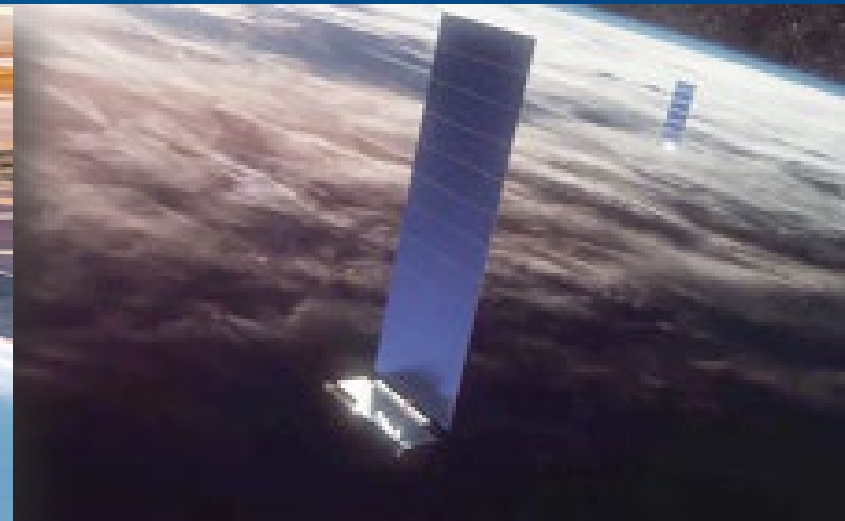
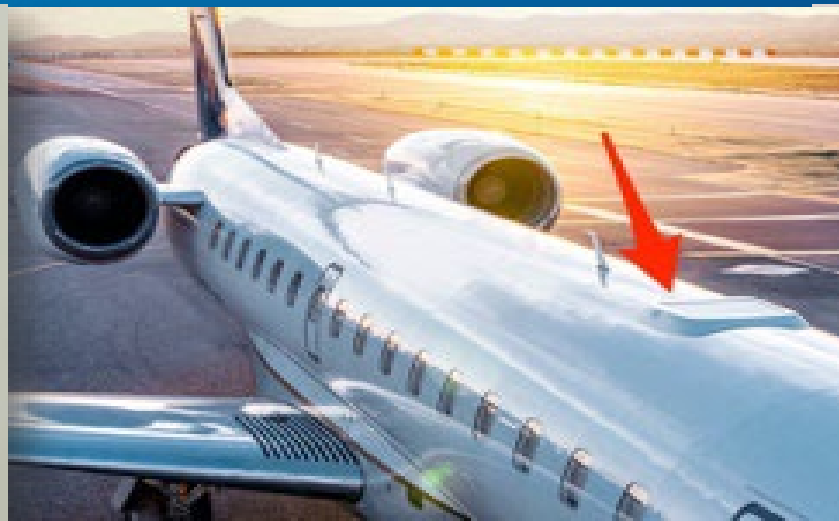
All Terrain Vehicle & Utility Task Vehicle





# Business Development –LEO

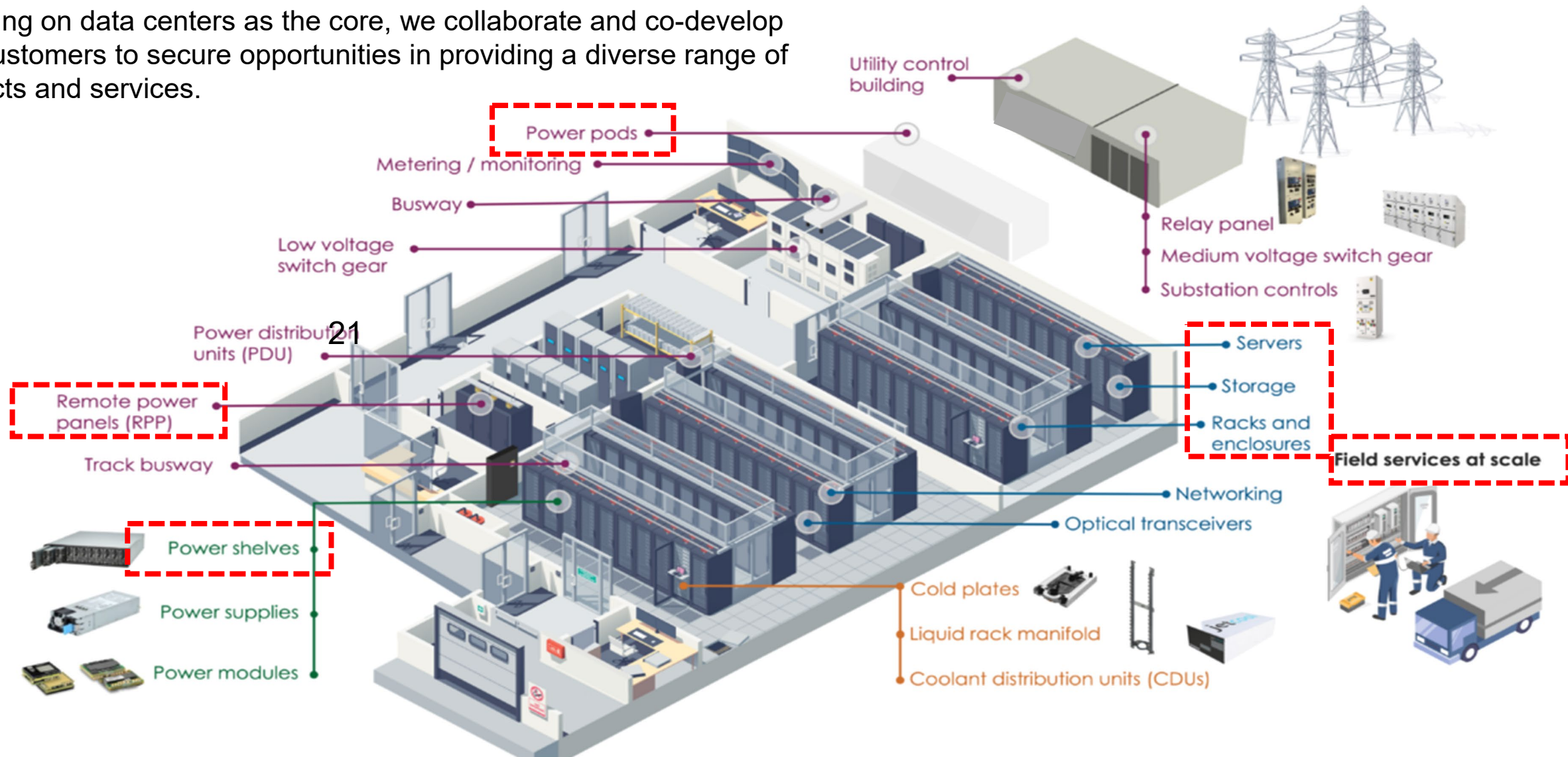
ESON



- ✓ Regionalized production layout completed and entering ramp-up phase.
- ✓ Mass-production components expanding into multiple applications:
  - ◆ Ground receiving equipment (incl. gateways)
  - ◆ Aircraft systems
  - ◆ Satellite hardware
- ✓ Actively pursuing additional U.S. and European LEO operators.

# Business Development – Data Center

Focusing on data centers as the core, we collaborate and co-develop with customers to secure opportunities in providing a diverse range of products and services.





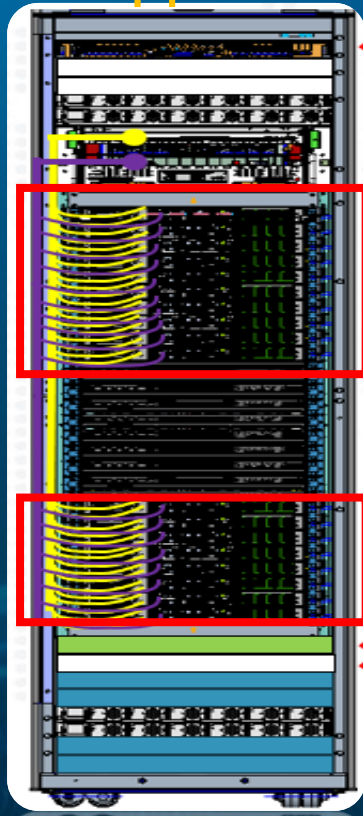
# Business Development – Server

ESON

- Global production footprint providing a flexible supply chain and reducing tariff exposure.
- Developing complementary products (power shelves, switches, BBU) to expand diversified server applications.



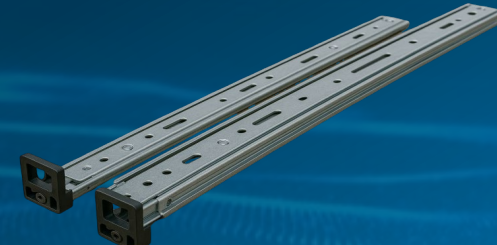
RACK



AI SERVER



STORAGE SERVER



COMPONENTS





- The U.S. Inflation Reduction Act accelerates the relocation of energy-sector manufacturing.
- With manufacturing reshoring to the U.S., demand for residential and industrial power is rising sharply, driving rapid growth in energy-storage and efficiency-equipment markets.
- **Multiple North American new-energy customer programs have entered mass production.**



## Self-determined Carbon Reduction Plan

- The Group has transitioned its remaining diesel generators to natural gas, thereby reducing carbon emissions.
- Complete the evaluation for the construction of photovoltaic power facilities at the Vietnam plant by 2025.

## Water Resource Management

- As the plant is located in a water-stressed region, it submits its estimated water consumption plan for the following year to the local water company at the end of each year.
- The Company has trained one employee responsible for water conservation and conducts

Unit : Megaliters

Item	2024	
	All Regions	Water-stressed Regions
Total water withdrawal (a)	179.068	179.068
Total water discharge (b)	11.197	11.197
Total water consumption (a)-(b)	167.871	167.871



## Waste Management

The Company has established a dedicated management unit in accordance with the ISO 14001 management procedures to effectively monitor the sources, output, and management measures of waste. Additionally, the Company conducts a detailed analysis and response regarding the actual and potential impacts related to waste.

- In 2024, the total waste generation was 1,825.47 metric tons, representing a decrease of approximately 15.58% compared to 2023.
- This is mainly because Catcher has enhanced employees' awareness of energy conservation and emission reduction through training and promotional activities, established maintenance plans for machinery and equipment, and procured raw and auxiliary materials with longer service life and better environmental performance.
- By improving employee capabilities, the Company has reduced product defect rates and minimized the volume of scrapped products

2024	Hazardous Industrial Waste	Non-hazardous Industrial Waste	General Waste	Total
Waste generated	29.23	1,430.93	365.31	1,825.47
Waste directly disposed	15.87	-	365.31	381.18
Incineration (with energy recovery)	-	-	365.31	365.31
Incineration (without energy recovery)	15.87	-	-	15.87
Waste transferred for disposal	13.36	1,430.93	-	1,444.29
Recycled	13.36	1,430.93	-	1,444.29
Waste recycling rate (%)	46%	100%	0%	79%

Home > Social Responsibility > Information Center > Environmental Social Governance Report

# Environmental Social Governance Report



In future reports, the Company will follow operational guidelines to disclose industry-specific indicators in accordance with SASB Standards and include a content index mapped to SASB Standards. While continuing to elaborate on the specific actions or measures the Company has taken to manage climate change risks, linking them to “material topics,” we will plan to include frameworks of TCFD, TNFD, as well as IFRS S1 and S2 in future reports.

## 2024 Environmental Social Governance Report

**Time :**

January 1, 2024 to December 31, 2024.

**Organizational Boundaries :**

This Report outlines the Company's promotion and performance of its social sustainability policies in the areas of operational strategies and economic performance, information security, corporate governance and integrity management, climate change and adaptation, talent development, and occupational health and safety, covering the period from January 1, 2024 to December 31, 2024.



# **04 Q & A**

Thank you